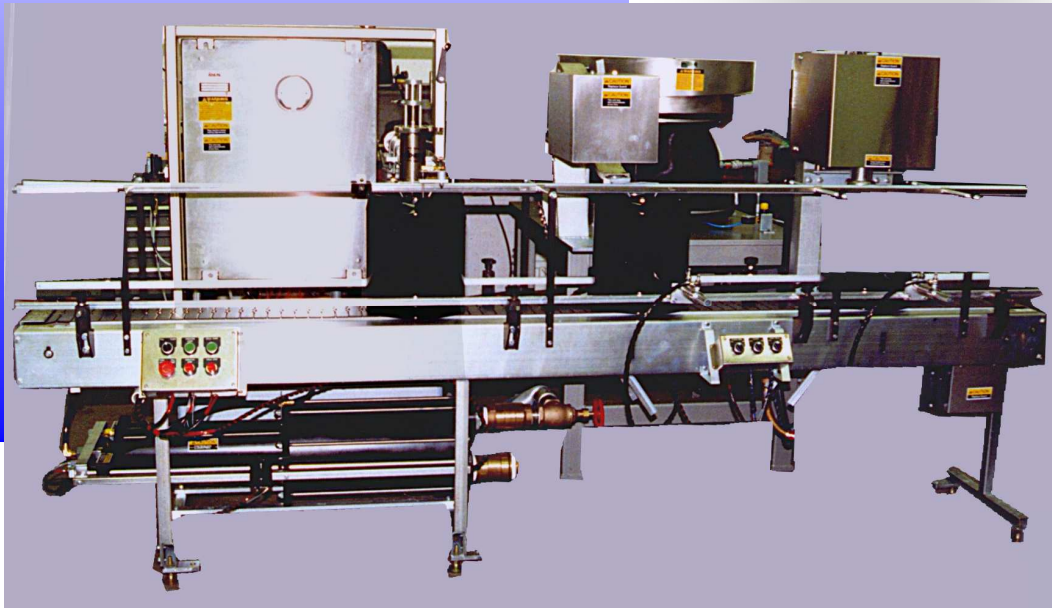


AFS-10551

Industry Solutions Since 1949



This Volumetric filling machine is **IDEAL** for packaging into five gallon containers. Load containers on the conveyor with handle up and bung to back. With handle captured in a guide, the container is then transferred and automatically stopped under the nozzle and filled by volume. After the fill is complete it is conveyed under the cap placer, and then is stopped under a Rieke® style crimper and sealed. Then it is conveyed off the machine.



Automatic Volumetric Filling and Closing Machine for 5 Gallon Containers

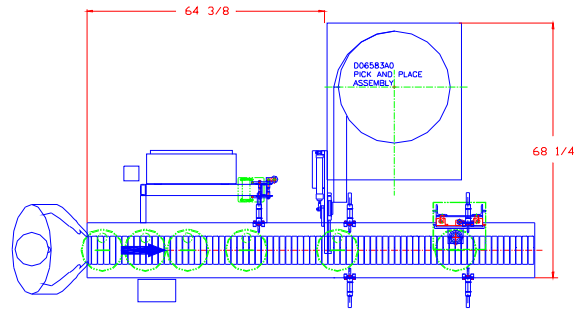
FEATURES:

- ◆ Infinite fill limit valve for changing volume on the next fill cycle
- ◆ Dispenses in a single stroke for fast fills
- ◆ Zinc plating provides a durable finish
- ◆ Throttle valve for controlling product flow to the nozzle
- ◆ Allen-Bradley PLC for machine control
- ◆ Rieke® Flex-Spout® Crimper

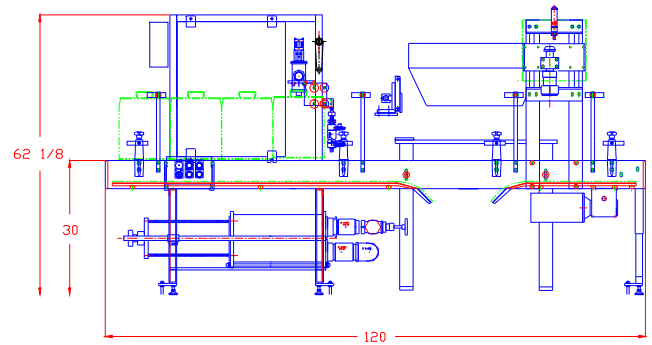
May be covered by one or more of the following Patents: 5,505,233, 5,823,406, 6,148,877, 6,595,250

IDEAL[®]
MANUFACTURING & SALES CORP.

Top View



Front View



Options:

- Controls for hazardous locations
- Flush attachments connect to the nozzle for enclosed cleaning
- Bottom up filling
- Rotary tables
- Variable speed conveyor
- Nozzle obstruction detector
- Flex Spout placer/inserter



4607 Dovetail Drive
Madison, WI 53704

Phone: 608-241-1118
Toll Free: 800-383-1128
Fax: 608-241-4448

E-Mail:

sales@idealmfg.com

Visit our Website at:

www.idealmfg.com

Machine Specifications

Electrical	115 VAC, single phase, 60 Hz
Air	8 SCFM @ 80 PSI (clean dry air)
Container Size	5 gallon tighthead
Speed*	CPM
	1 Head
5 Gallon	3 - 6
Accuracy**	± .25% by volume

* Fill rates will vary depending on container size, container shape, fill opening, accuracy required, product supply, as well as individual product characteristics.

**A consistent head pressure in the tank this machine will draw from, will help keep the fill accurate.

Since we continuously strive to improve our products, we reserve the right to make changes and modifications without notice.